



COLUMBIA BASIN FISH AND WILDLIFE AUTHORITY

**CBFWA Wildlife Habitat Evaluation Procedures (HEP)
(2006-006-00)**

*Presented to Members
By
Ken MacDonald and Paul R Ashley*



SM

HEP 101

- HEP was and continues to be used to account for habitat losses associated with construction of hydro facilities and habitat gains from mitigation/compensation projects
 - Impacts summarized as habitat units (HU)
 - "HU ledger" (Table 11-4; NPCC's Program)
 - Habitat losses were summarized in the "Brown Books"
 - Both HU losses and gains were estimated using cover type specific HEP species models



HEP 101 Summary

- HEP is an Accounting Tool used to quantify habitat losses (HU loss ledger) and,
- Measure credit towards the losses
- HEP is not used to:
 - Monitor project effectiveness towards most floristic, biological, or ecological objectives
 - Monitor species population response



Current Situation

- Don't know crediting status
 - Inconsistencies in HU stacking/reporting
 - Differences in loss assessments
 - Lack of cover type/species matrices in some cases
 - "Total" losses versus "Net" Losses
 - Difficult to determine HEP needs prior to Pisces "tool"
 - Pisces HEP data inputs from reports/info provided by managers
- HEP follow-up surveys behind schedule (based on five year intervals)
 - HEP survey needs identified in Pisces for FY 2009



Current Situation (cont.)



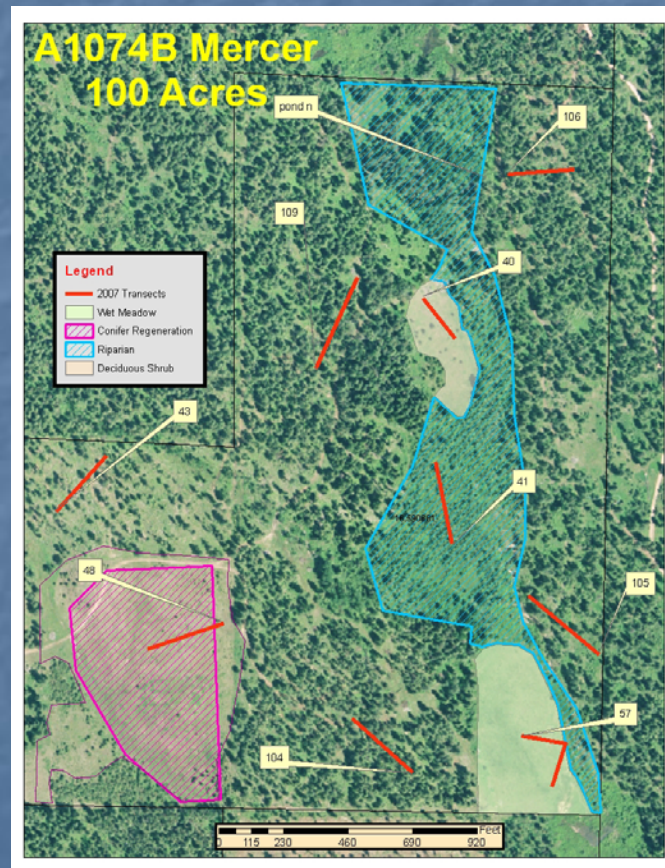
- Determined HEP is not the appropriate crediting tool for Willamette Valley mitigation projects
 - Original HEP surveys not repeatable
 - Used “checklists” not HEP models (few models available)
 - HU “stacking” issues
 - Habitat and species priorities have changed since loss assessment HU estimates were derived
 - Sub-basin Plans focus on oak savannah, Willamette Valley prairie/associated wildlife species etc.....not elk and upland conifer forests....(out of kind, out of place mitigation)
 - Little to no public, NGO, or Agency support for HEP in the Willamette Valley – Conclusion: **New Crediting Tool Needed**

Current Situation (cont.)

- Preliminary assessment of Combined Habitat Assessment Protocols (CHAP) as a crediting “tool” for the Willamette Valley showed promise for overcoming crediting issues
 - CHAP combines elements of HEP with NHI’s HAB program
 - CHAP does not require HEP models
 - Eliminates evaluation species, “out of kind” “out of place” concerns
 - Eliminates HU “stacking” issues
 - Is ecologically more robust than HEP
 - Is repeatable



FY 2009+ Project Needs



CBFWA HEP Project Needs

- Fund additional full time assistant, temporary technician, and fund/implement CHAP in the Willamette Basin
 - Benefits
 - Conduct new baseline surveys and make significant “headway” completing backlog of follow-up surveys
Complete HEP results and reports in a timely manner
 - Complete review of loss assessment matrices and project HU crediting
 - Determine “crediting” for Willamette Valley mitigation sites based on the CHAP methodology



Alternatives

- Alternative 1 – Status quo
- Alternative 2 – Hire second Temporary Technician and fund CHAP/NHI contract
- Alternative 3 - Hire full-time professional assistant, Contract with NHI for CHAP in Willamette
- Alternative 4 – Combine Alternatives 2 and 3



In Summary....

- MAG recommended Alternative 4.....



FY 2009 Funding Request

- Regional HEP Team "BOG" Request (2009)
- \$115,729
 - RHT Full time Field Team Supervisor position
 - Additional Temporary Field Tech Position
 - NHI contract to complete CHAP pilot study in the Willamette Basin
- Total RHT budget including BOG request: \$402,729
 - \$287,000 – current budget
 - \$115,729 – BOG request



Requested Member Action

- **Approve HEP Project Budget Modification Request for FY 2009**

Questions?