

UMATILLA INDIAN RESERVATION
SHOSHONE-BANNOCK TRIBES
WASHINGTON FISH & WILDLIFE
SALISH KOOTENAI TRIBES • NATIONAL
MARINE FISHERIES SERVICE • YAKAMA
INDIAN NATION • IDAHO FISH & GAME
WARM SPRINGS RESERVATION • BURNS-
PAIUTE • KOOTENAI TRIBE • SPOKANE
TRIBE • MONTANA FISH, WILDLIFE & PARKS
COLVILLE RESERVATION • OREGON FISH &
WILDLIFE • NEZ PERCE TRIBE • KALISPEL
TRIBE • U.S. FISH & WILDLIFE • SHOSHONE-
PAIUTE TRIBE • COEUR D' ALENE TRIBE

**COLUMBIA
BASIN
FISH & WILDLIFE
AUTHORITY**

Integrated Regional Management Plan *Proposed Process and Schedule*

SUMMARY

There is currently a disconnect between the NPCC's project selection process, recovery planning, and the Program amendment process

There is a role for CBFWA to develop an integrated Regional Management Plan as a Program amendment and an opportunity to use the RMP to guide the project selection process

August 2-3, 2005 Members Meeting

Melinda Eden indicated that the NPCC is seeking CBFWA's assistance in:

- Defining project selection process**
- Facilitate regional review of projects**
- Assist with AHA modeling**
- Assist with regional allocations of money**
- Defining final provincial objectives**
- Identifying CBFWA's role in project selection**

August 2-3, 2005 Members Meeting

Rob Walton indicated that the NOAA/NMFS is seeking CBFWA's assistance in:

- Implement ecosystem approach – bull trout, lamprey, and sturgeon with salmon rec.**
- Integrate prioritized objectives and recovery goals**
- Assist NOAA in recovery plans and integrating blocked area needs**
- Communicating relationship between ESA goals and federal trust/treaty responsibilities**

August 2-3, 2005 Members Meeting

Bill Maslen indicated that the BPA is seeking CBFWA's assistance to:

- Consolidate report of resource status and Program achievements
- Facilitate Cost share workshop and information
- Evaluation of risks associated with actions and rates of implementation
- Support for funding contributions from others
- Develop prioritization and limiting factors strategies
- Help develop decision process to address limiting factors

August 2-3, 2005 Members Action

Date	Current anticipated NPCC Schedule	CBFWA Recommended Schedule
Sep-05	Adopt 07-09 project selection process	CBFWA presents integrated Regional Management Plan approach
Oct-05	NPCC Solicit Program Amendment	CBFWA facilitates province level integration which includes: resident fish population status and management report, 4 H planning approach for anadromous fish (integrated with TRT products and SBPs), and wildlife update DRAFT Recovery Plans Due
Nov-05	Solicit 07-09 Project proposals	
Dec-05		
Jan-06	07-09 Project proposal submittal	NPCC Solicit Program Amendment and CBFWA works on regional integration of province level work
Feb-06	Project review (5 mo)	
Mar-06	Program amendment comments/recommendations	Coordinated Basinwide Ecosystem Plan (Unified Plan) which integrates: SBP goals, Province level goals and objectives for each focal species, ESA recovery goals, Set of actions by strategy to meet objectives and schedule (basis for project solicitation and selection and cross cut budget approach)
Apr-06		BPA project proposal solicitation
May-06		Project review (6 mo) facilitated by CBFWA Including site visits, project presentations, management and scientific review, and CBFWA recommendations
Jun-06		
Jul-06	NPCC 07-09 project selection - province	
Aug-06		NPCC Adopt Program Amendment NPCC select 07-09 projects
Sep-06	Adopt Program Amendment with province biological objectives	
Oct-06		
Nov-06		Completed integrated Council Program with recovery plans, project selection for 07-09 with cross cut budget opportunities
Dec-06	NpCC 07-09 project selection - mainstem	

August 24, 2005

Decision Framework Workgroup

Steps:

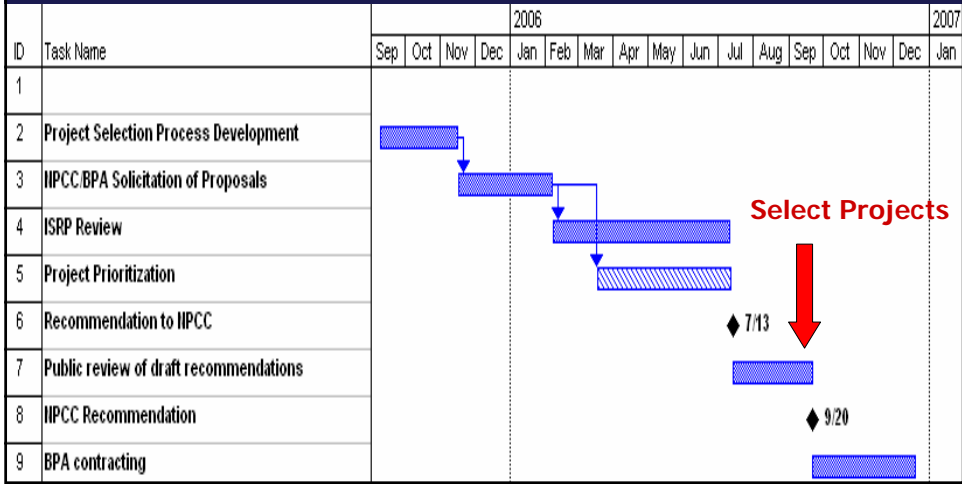
- **Update process objectives**
- **Identify critical elements of processes**
- **Update draft schedules**
- **Identify opportunities for integration**

Process Objective

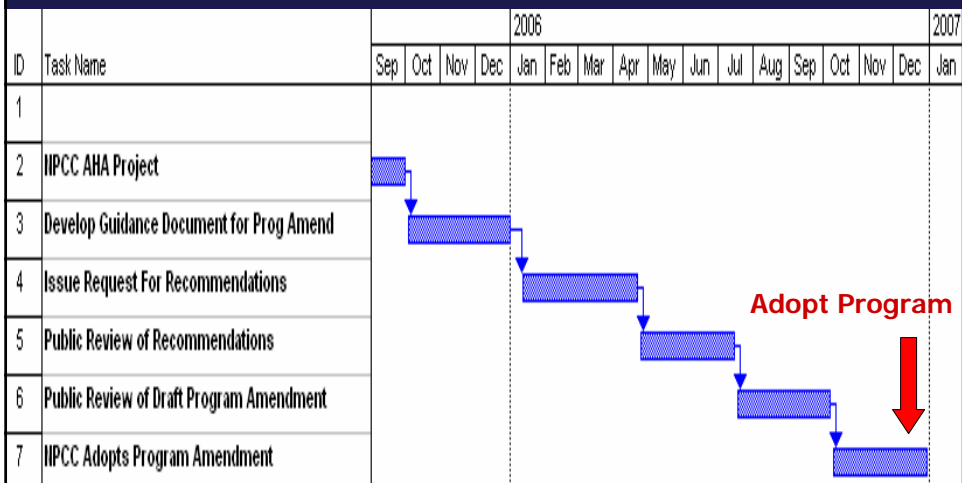
To create a decision pathway and schedule:

- **That allows the NPCC the opportunity to select projects... based on an Integrated Regional Management Plan**
- **Which integrates Subbasin Plans, ESA recovery plans, and other existing Federal, State and Tribal plans into a single unified plan for the basin**
- **To support a project selection process that puts projects on the ground for Fiscal Year 2007 with adequate ISRP review and local prioritization**
- **And results in a regional research plan, a Program-wide monitoring and evaluation framework, and a Program-wide coordination plan**

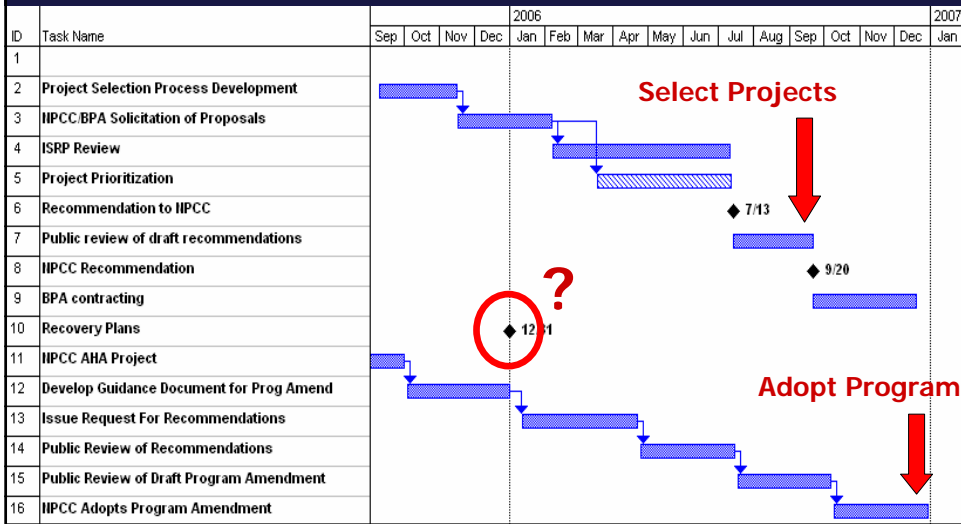
Project Selection Process NPCC Staff Draft



Program Amendment Process NPCC Staff Draft



Problem: Disjointed Parallel Processes



SOLUTION: Regional Management Plan

- CBFWA New Directions Work Plan – Objective 3
- Integrates recovery planning, subbasin planning, and Federal, State, and Tribal fish and wildlife plans
- Provides a reporting mechanism for measuring success of the Program

Regional Management Plan Process

Step 1: Province Planning Workshops

- Using the recent NPCC AHA effort and CBFWA resident fish status review as a base, province level workgroups would develop biological objectives and/or action plans

Step 2: Integrate Province Plans to create RMP

- CBFWA would facilitate the integration of the province level action plans, combined with the M&E Framework and Research and Coordination plans to form the RMP

Regional Management Plan

- **CBFWA would facilitate Province level meetings of the technical staffs that developed the subbasin assessment information for subbasin planning and recovery planning**
- **The technical groups would identify existing population objectives and evaluate strategies consistent with subbasin and recovery plans**
- **The technical groups could also develop potential habitat and hatchery actions necessary to meet the population level objectives**

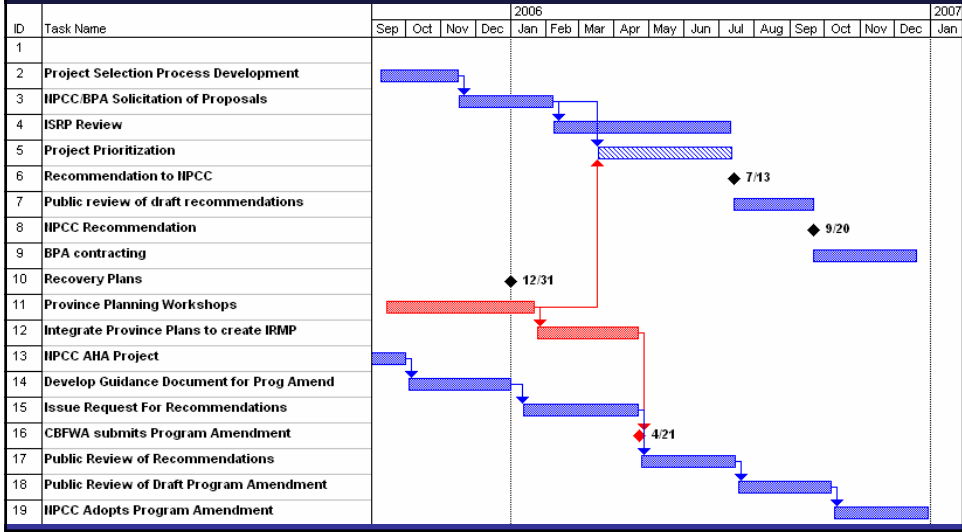
RMP Deliverables

- **Fish and wildlife population level objectives integrated with ESA Recovery Plan and broader management objectives (e.g., Tribal and State plans)**
- **Strategies that address the primary limiting factors to achieving the biological outcomes**
- **An implementation schedule, and likely funding partners, for achieving the biological outcomes**

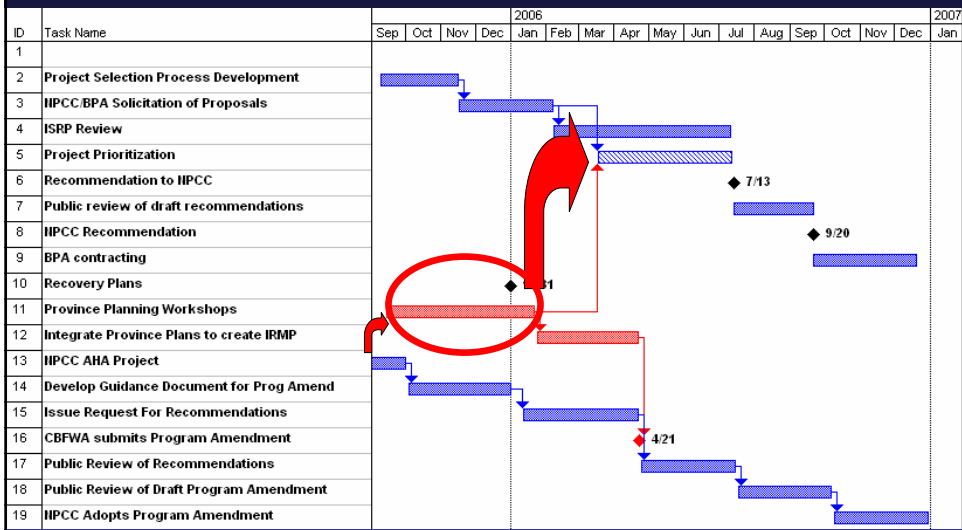
RMP Deliverables for Basin-wide Programs

- **A regional Monitoring and Evaluation Framework to guide project selection and support an annual status of the resource report**
- **A basin-wide Research Plan**
- **A basin-wide Information Management and Coordination Plan**

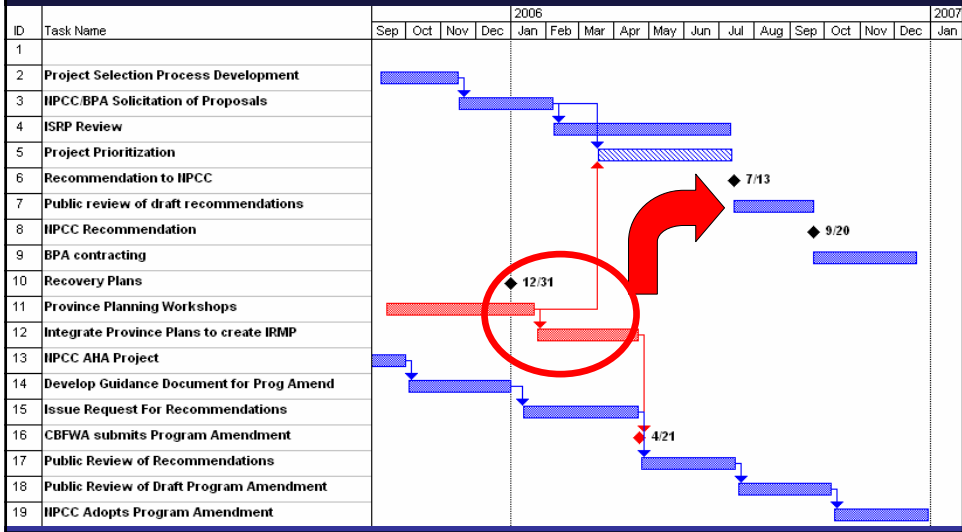
Regional Management Plan DFW Draft Schedule



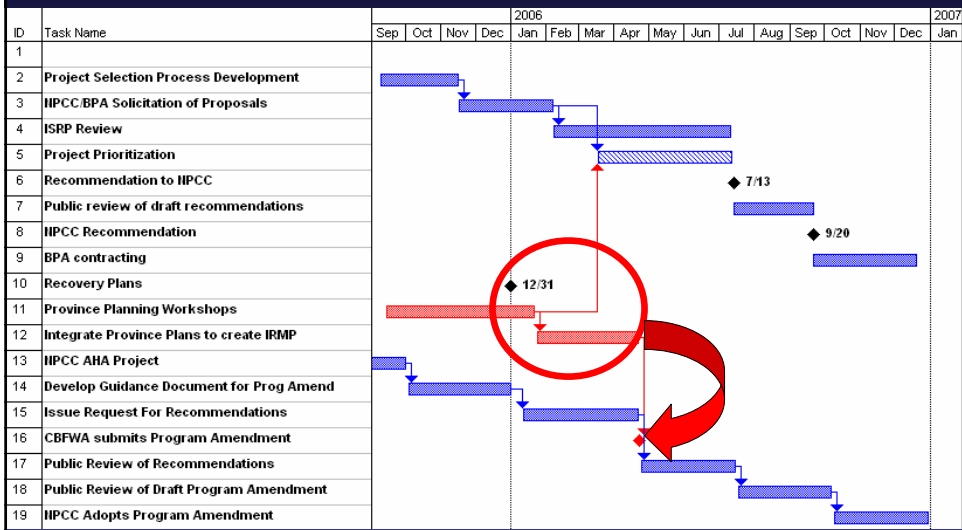
RMP – Province Plans Guidance for Project Prioritization



RMP Foundation for CBFWA Project Recommendations



RMP CBFWA Program Amendment Recommendation



Action for Implementation

CBFWA Membership approve development of the RMP

Direct CBFWA committees to develop and implement a work plan for the development of the RMP

CBFWA Membership provide presentation to NPCC describing our intention to develop the RMP