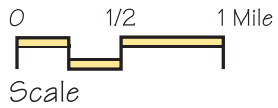


Proposed Acquisition Areas



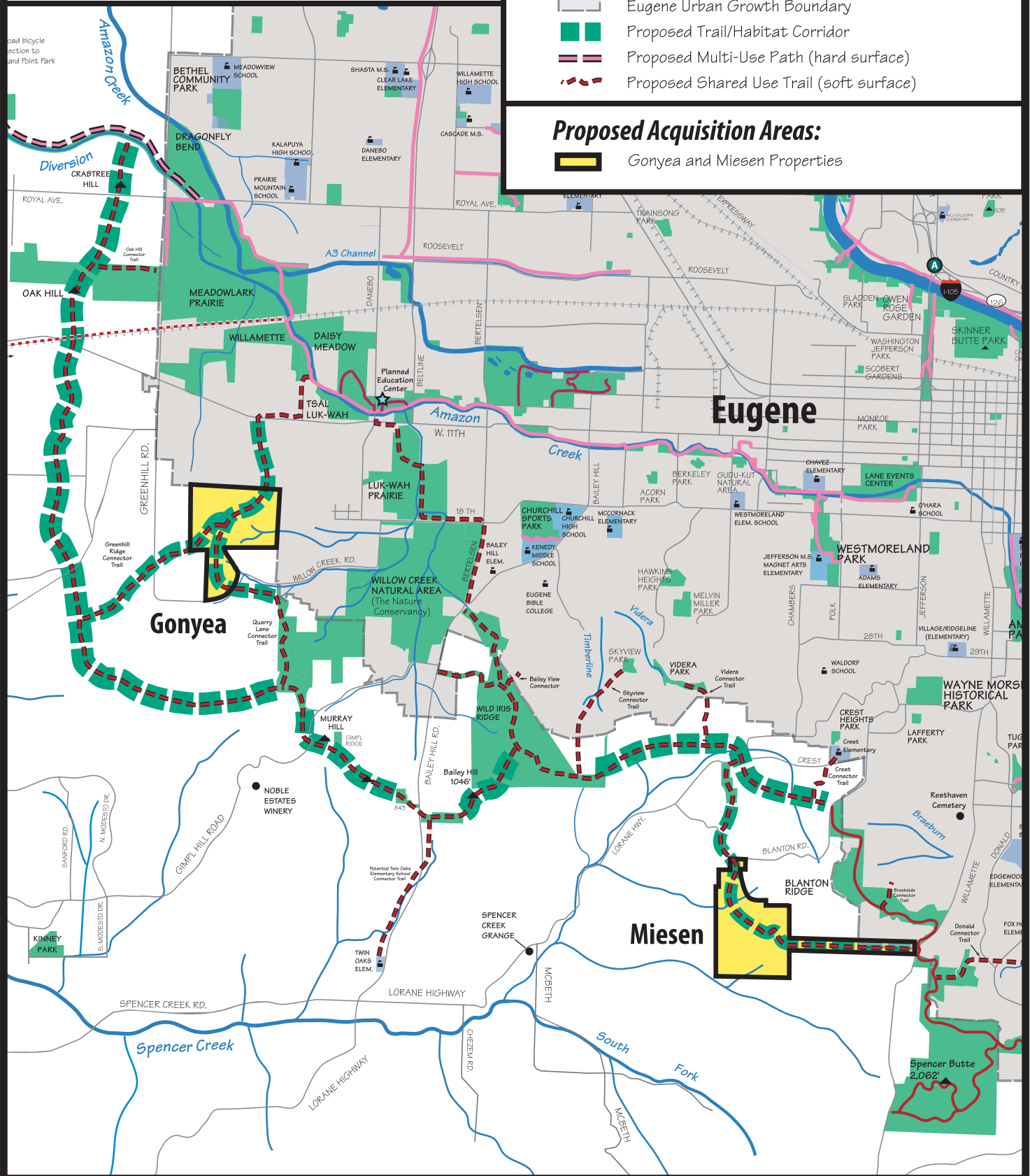
February
2010

Legend:

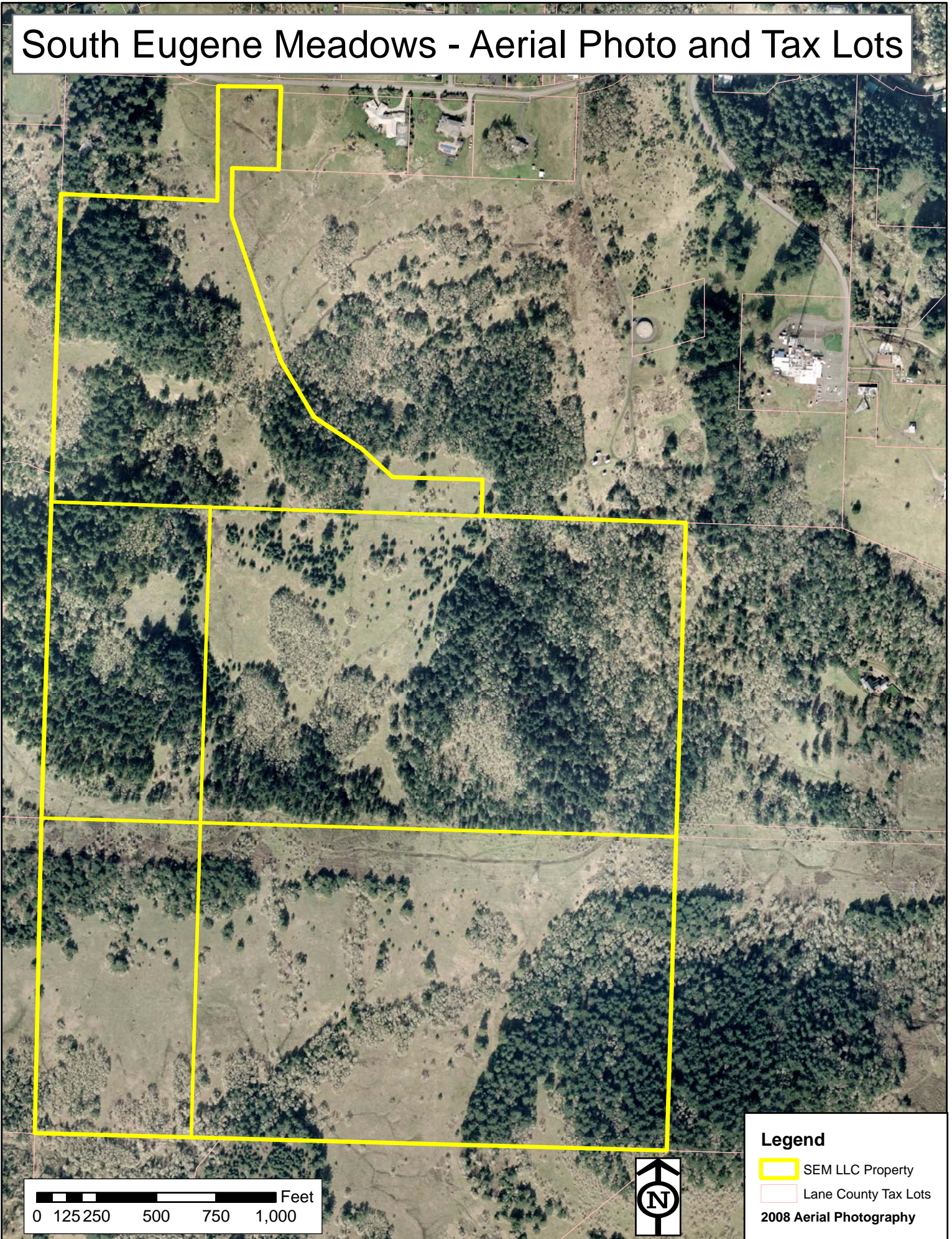
- Existing Park or Open Space (Public or TNC)
- Existing Multi-Use Path (hard surface)
- Existing Trail (soft surface)
- Existing Combined Hiking/Mnt. Bike Trail
- Major Waterways
- Eugene Urban Growth Boundary
- Proposed Trail/Habitat Corridor
- Proposed Multi-Use Path (hard surface)
- Proposed Shared Use Trail (soft surface)

Proposed Acquisition Areas:

- Gonyea and Miesen Properties



South Eugene Meadows - Aerial Photo and Tax Lots



0 125 250 500 750 1,000 Feet



Legend

-  SEM LLC Property
 -  Lane County Tax Lots
- 2008 Aerial Photography

South Eugene Meadows - Habitat Map

