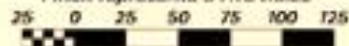


SCALE 1:6,152,000

1 inch represents 97.10 miles



Miles

July 2001



### Western Pond Turtle

*Clemmys marmorata*

Historic Range

Columbia River Basin, USA

BRITISH COLUMBIA



WASHINGTON

MONTANA

WYOMING



OREGON

IDAHO

UTAH

NEVADA

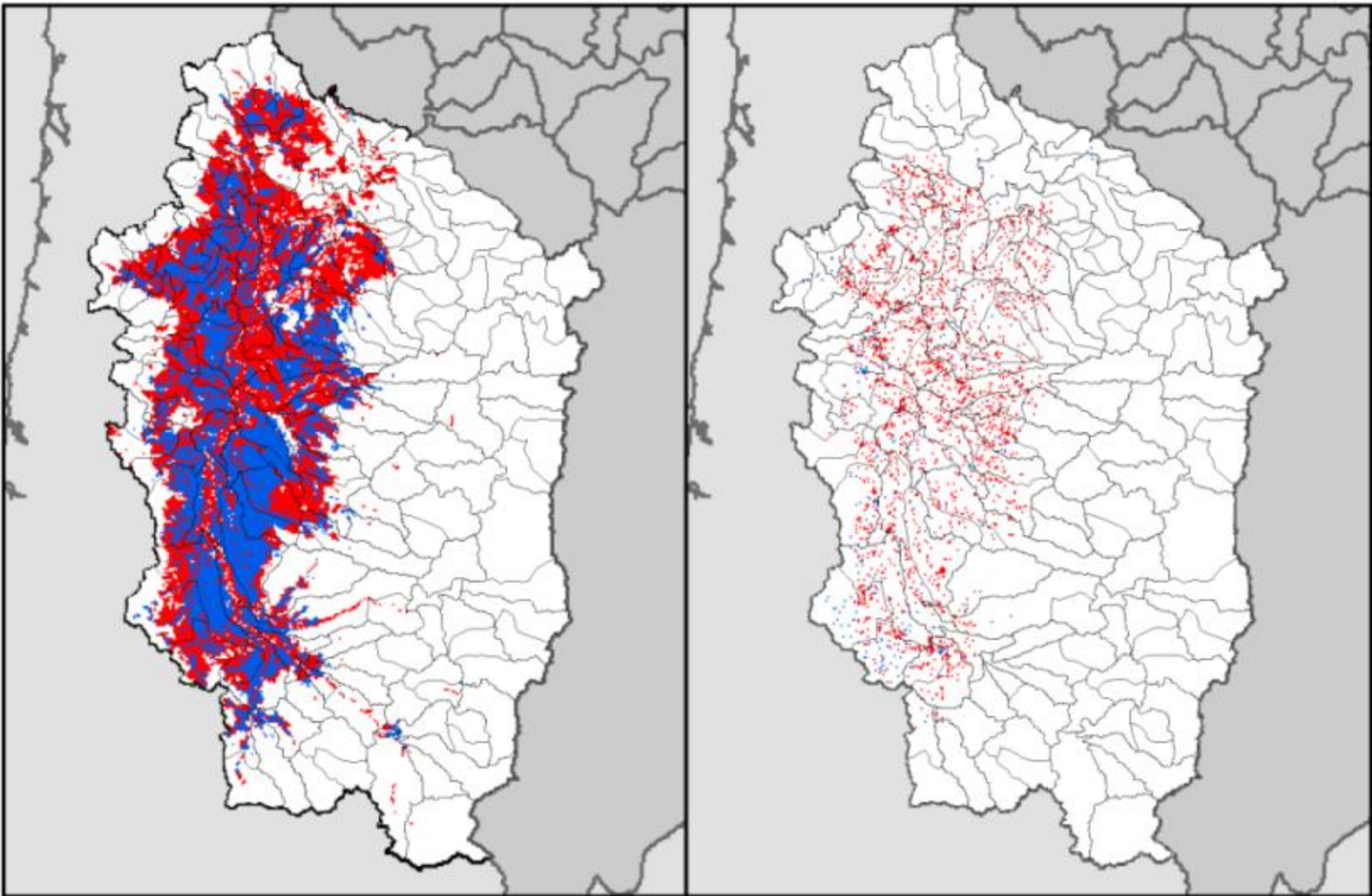
### Western Pond Turtle *Clemmys marmorata*

-  Columbia River Basin
-  Distribution

0 20 40 80 120 160  
Miles







Historic (c. 1850) Rangemap

Historic and Current Rangemaps  
for the  
Western Pond Turtle  
Willamette Subbasin  
Columbia River Basin  
United States

Current (1999) Rangemap

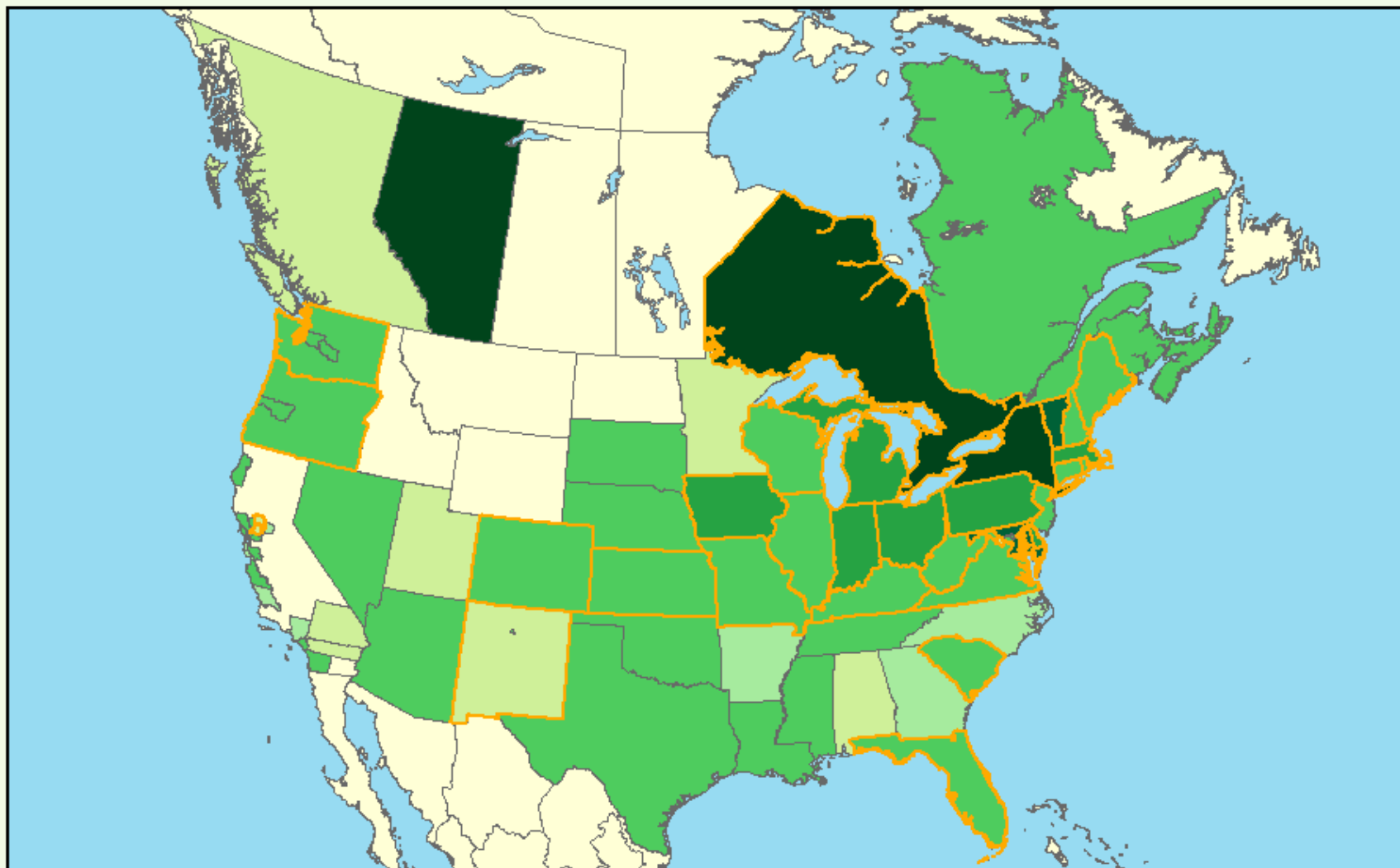


■ Close Association  
■ General Association



Source: Interactive Distribution Information System (IDIS),  
Portland Water Bureau (2005).

# Status of North American Breeding Bird Atlases



Atlas status as of January 2009.  
States shown with second round atlases have completed a first round atlas.

Source: Individual state and provincial breeding bird atlas datasets as archived at: <http://www.pwrc.usgs.gov/bba>

Prepared by the USGS Patuxent Wildlife Research Center, January 2009

## First Round Atlases

- 1st in-progress
- 1st completed
- 1st published

## Second Round Atlases

- 2nd in-progress
- 2nd completed
- 2nd published

- Atlases in BBA Explorer
- no atlas



Cedar Waxwing

Georgi Baird

## Christmas Bird Count

### Citizen Science in Action

**The 111th Christmas Bird Count: December 14, 2010 to Wednesday, January 5, 2011**

From December 14 through January 5 tens of thousands of volunteers throughout the Americas take part in an adventure that has become a family tradition among generations. Families and students, birders and scientists, armed with binoculars, bird guides and checklists go out on an annual mission - often before dawn. For over one hundred years, the desire to both make a difference and to experience the beauty of nature has driven dedicated people to leave the comfort of a warm house during the Holiday season.

Each of the citizen scientists who annually braves snow, wind, or rain, to take part in the Christmas Bird Count makes an enormous contribution to conservation. Audubon and other organizations use data collected in this longest-running wildlife census to assess the health

### Birds

- Bird FAQs
- + Birds & Science
- Bird Profiles
- + Birding Fun
- + Christmas Bird Count
- + State of the Birds
- Important Bird Areas
- + Great Backyard Bird Count
- Project Puffin
- + Wood Thrush Conservation
- International Alliances Program
- + Waterbirds

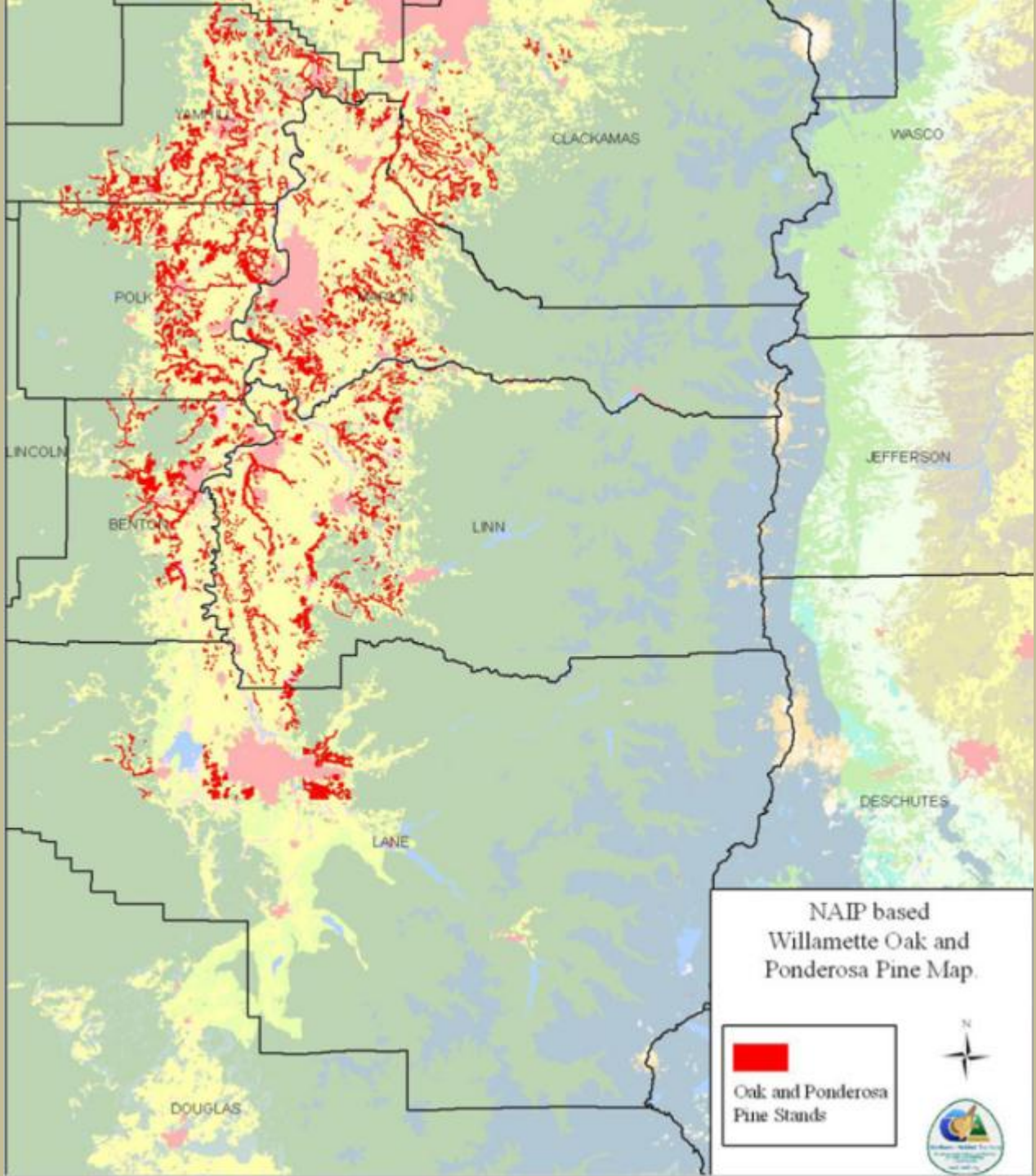
### Support Us



**FREE 2012 Audubon Calendar**

*Web exclusive* - Donate today to receive our **FREE**





NAIP based  
Willamette Oak and  
Ponderosa Pine Map.

  
Oak and Ponderosa  
Pine Stands

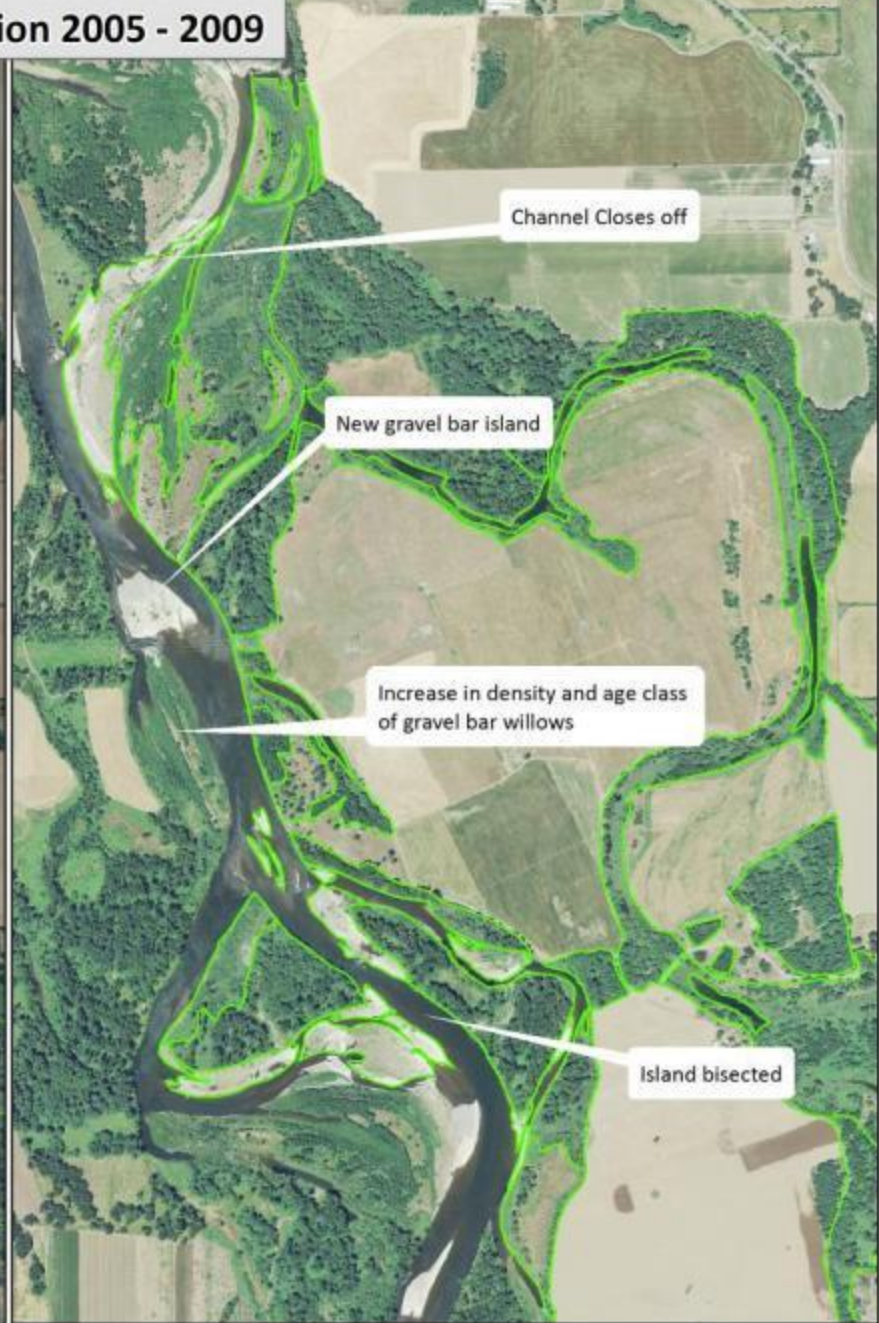




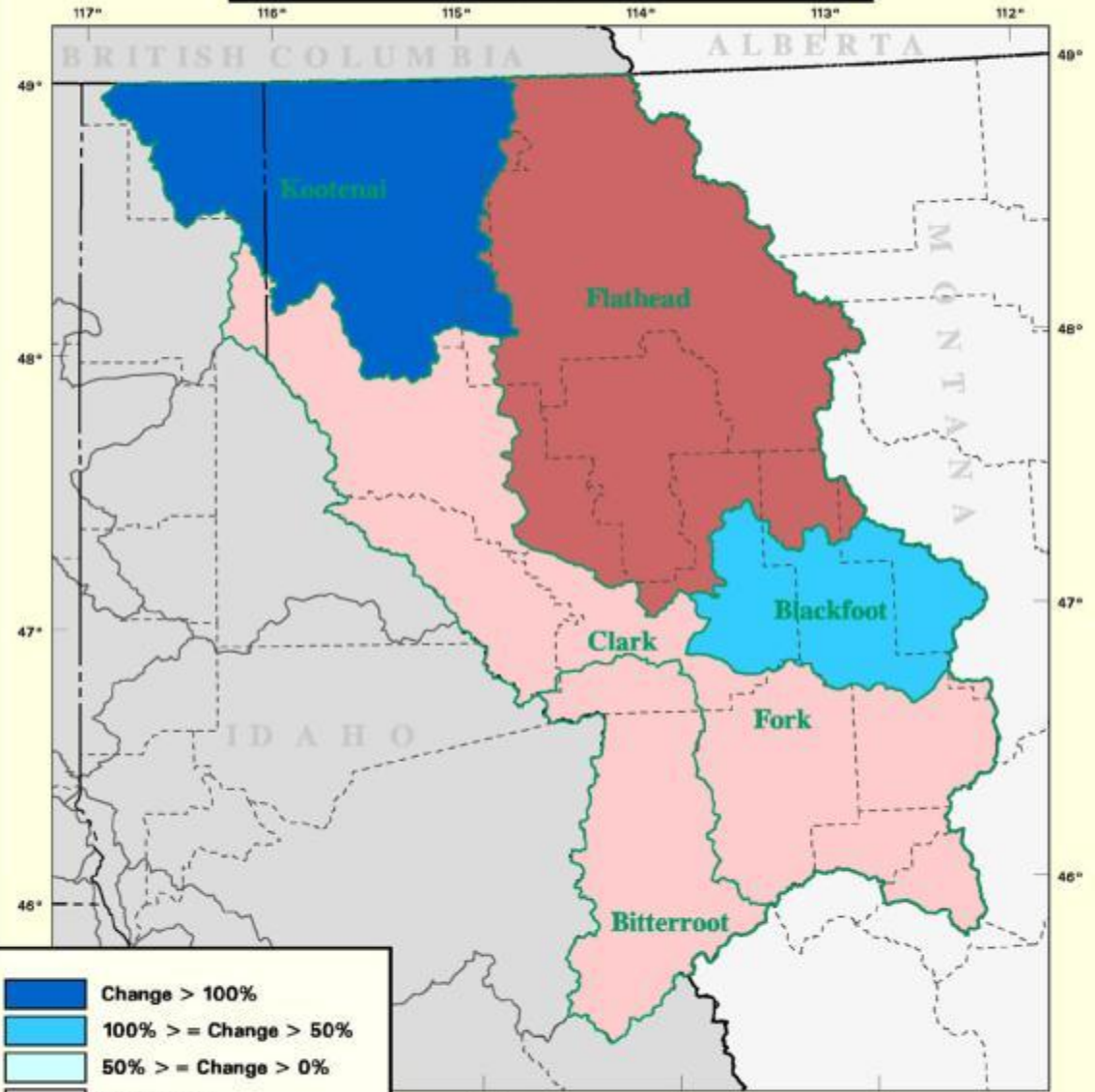
2005 NAIP Aerial Imagery

### Green Island Conservation Site Change Detection 2005 - 2009

2009 NAIP Aerial Imagery



**Percent Change in Wildlife-Habitat  
15 - Eastside (Interior) Grasslands  
Mountain Columbia Province  
Columbia River Basin  
United States**



115° 114° 113°

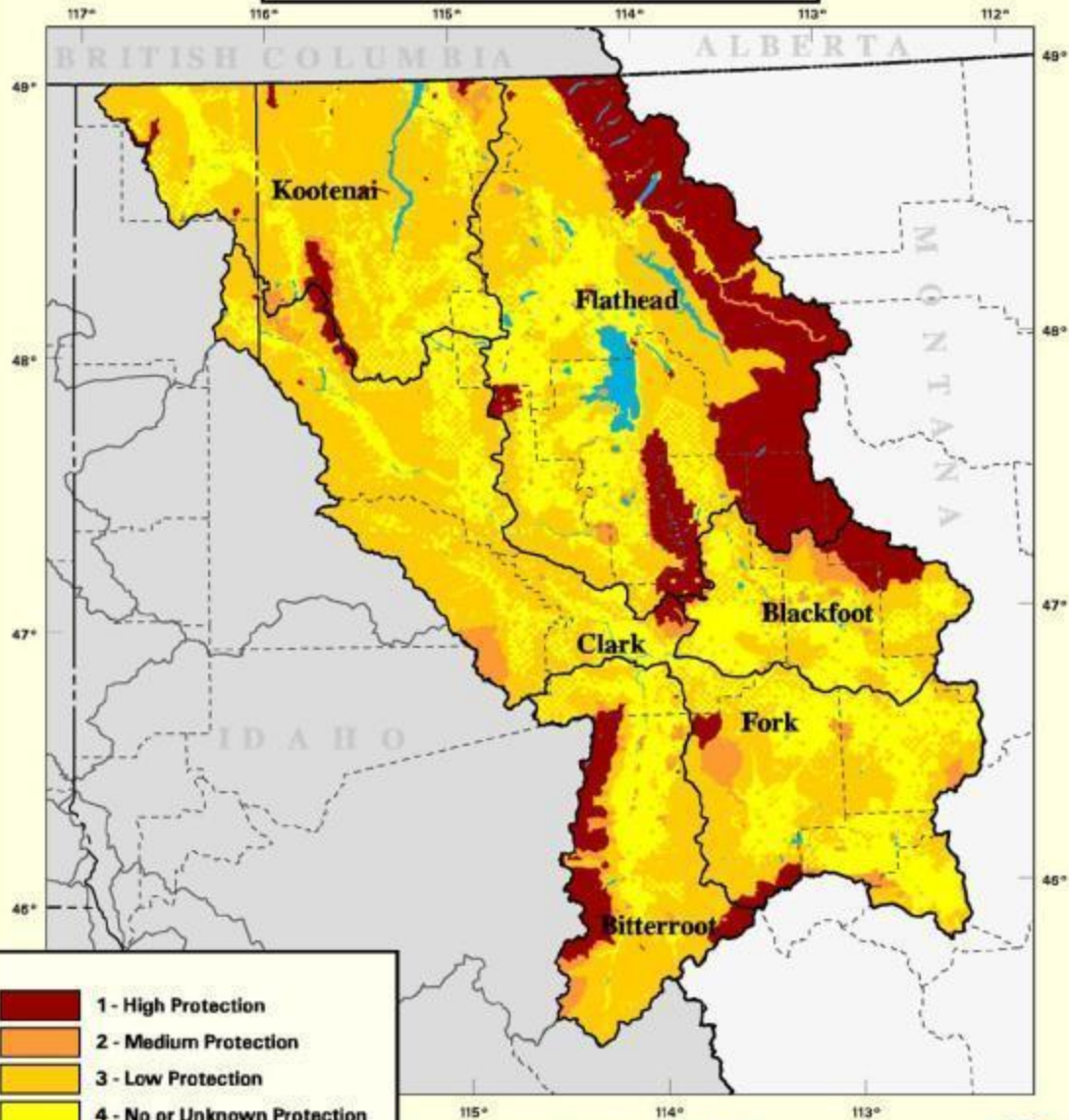
**SCALE 1:2,500,000**  
1 inch represents 39.46 miles

Miles

Source: Interactive Biodiversity Information System (IBIS).



**GAP Management-Protection Status**  
**Mountain Columbia Province**  
**Columbia River Basin**  
**United States**



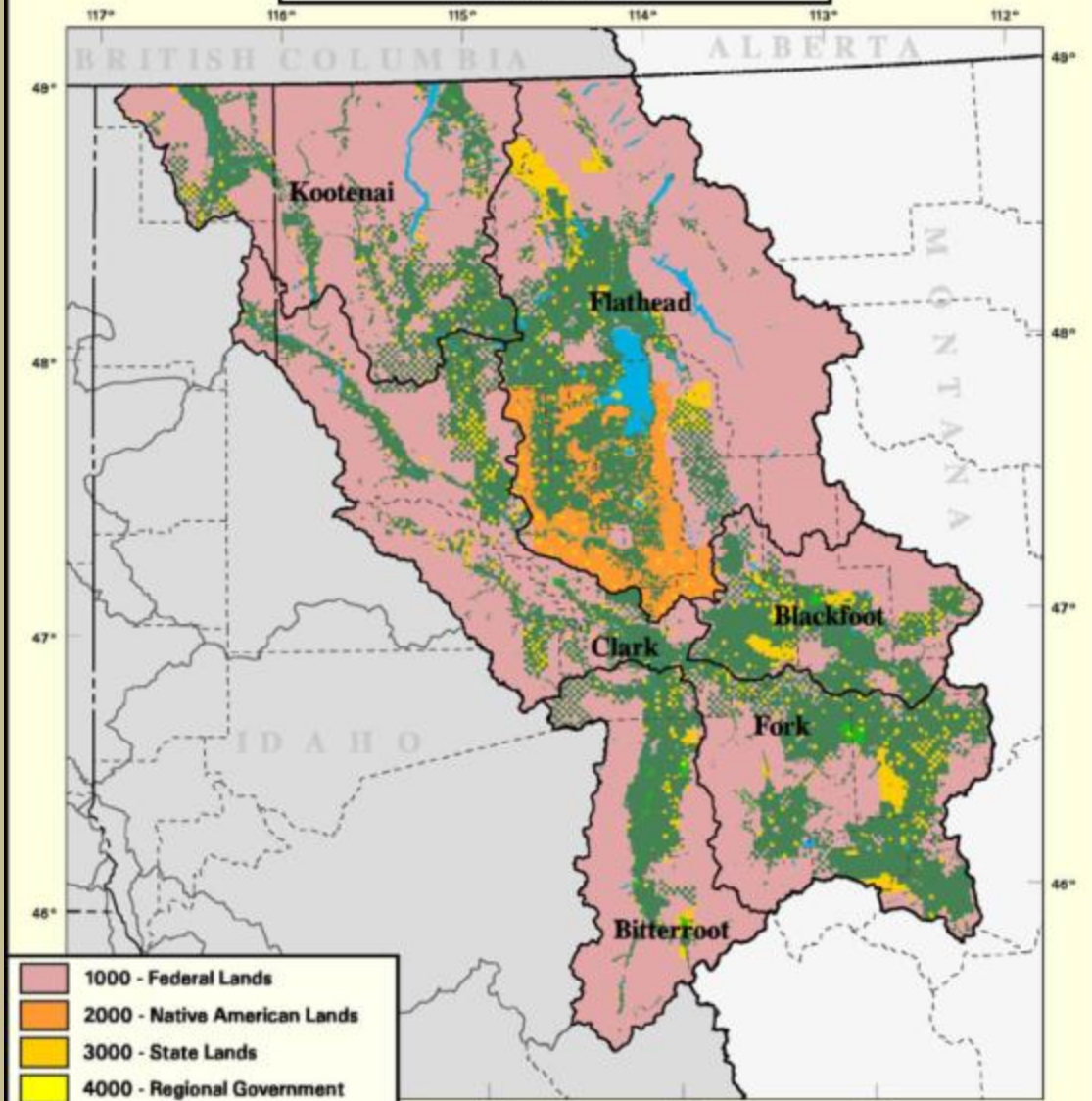
\* Please see GAP Stewardship Status handbook for more detailed descriptions ([www.gap.uidaho.edu/handbook/Stewardship](http://www.gap.uidaho.edu/handbook/Stewardship)).

SCALE 1:2,500,000  
 1 inch represents 39.46 miles  
 0 10 20 30 40 50 Miles



Source: Interactive Biodiversity Information System (IBIS). Northwest Habitat Institute. 2003.

**Land Ownership  
Mountain Columbia Province  
Columbia River Basin  
United States**



- 1000 - Federal Lands
- 2000 - Native American Lands
- 3000 - State Lands
- 4000 - Regional Government
- 5000 - Local Government Lands
- 6000 - Non-Governmental Org.
- 7000 - Private Lands
- 8000 - Water

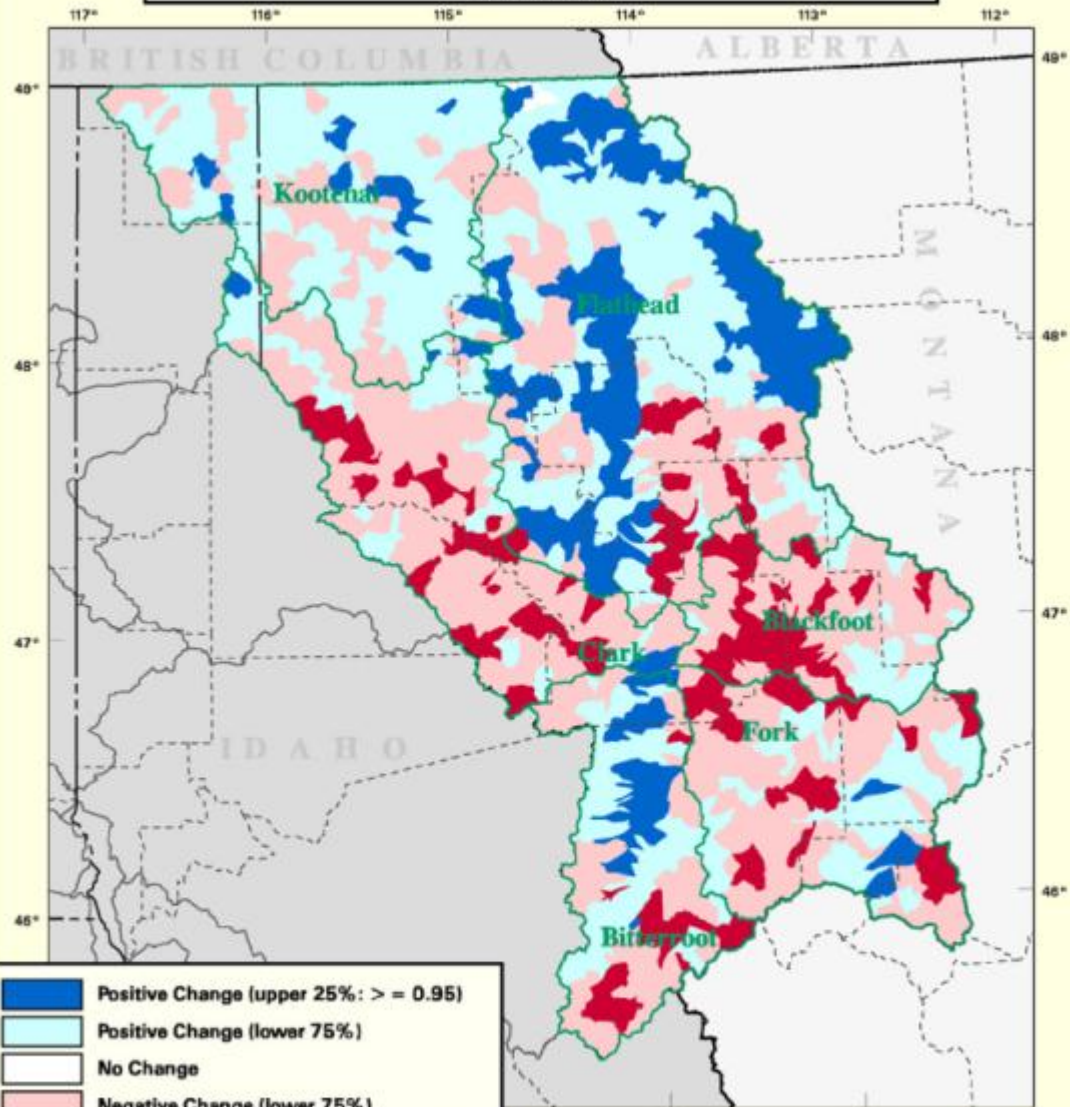
SCALE 1:2,500,000  
1 inch represents 39.46 miles  
10 0 10 20 30 40 50  
Miles  
April 2003



Source: Interactive Biodiversity Information System (IBIS). Northwest Habitat Institute, 2003.



**Change in Total Functional Diversity  
Historic (c.1850) to Current  
Mountain Columbia Province  
Columbia River Basin  
United States**



- Positive Change (upper 25%:  $\geq 0.95$ )
- Positive Change (lower 75%)
- No Change
- Negative Change (lower 75%)
- Negative Change (upper 25%:  $\leq -0.77$ )

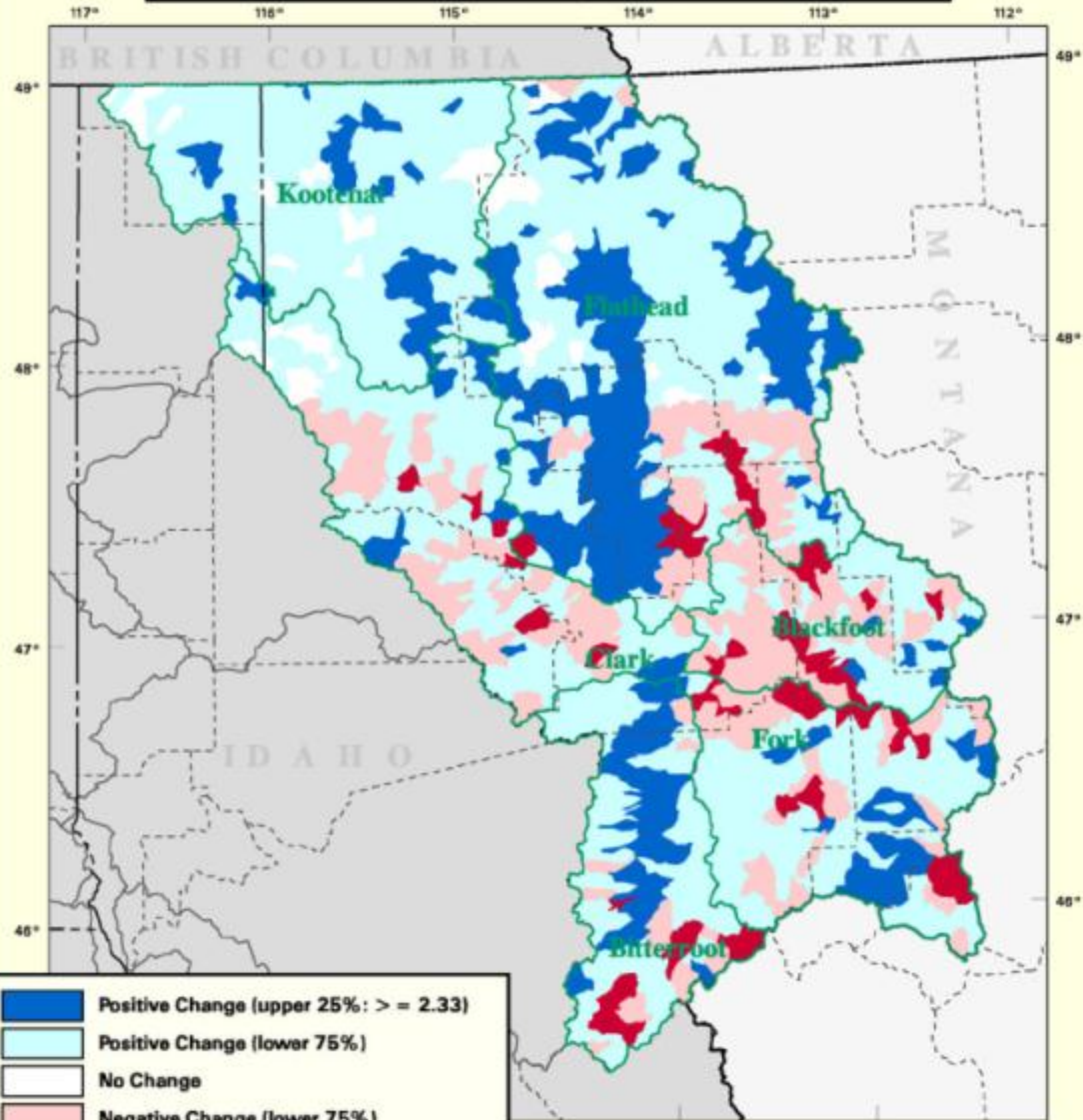
SCALE 1:2,500,000  
1 inch represents 39.46 miles  
10 0 10 20 30 40 50  
Miles

November 2002



Source: Interactive Biodiversity Information System (IBIS).  
Northwest Habitat Institute, 2002.

**Change in KEF 3.4  
 Transports Viable Seeds, Spores, Plants, Animals  
 Historic (c.1850) to Current  
 Mountain Columbia Province  
 Columbia River Basin, United States**



- Positive Change (upper 25%:  $\geq 2.33$ )
- Positive Change (lower 75%)
- No Change
- Negative Change (lower 75%)
- Negative Change (upper 25%:  $\leq -1.26$ )

**SCALE 1:2,500,000**  
 1 inch represents 39.46 miles  
 10 0 10 20 30 40 50  
 Miles

November 2002



Source: Interactive Biodiversity Information System (IBIS), Northwest Habitat Institute, 2002.